



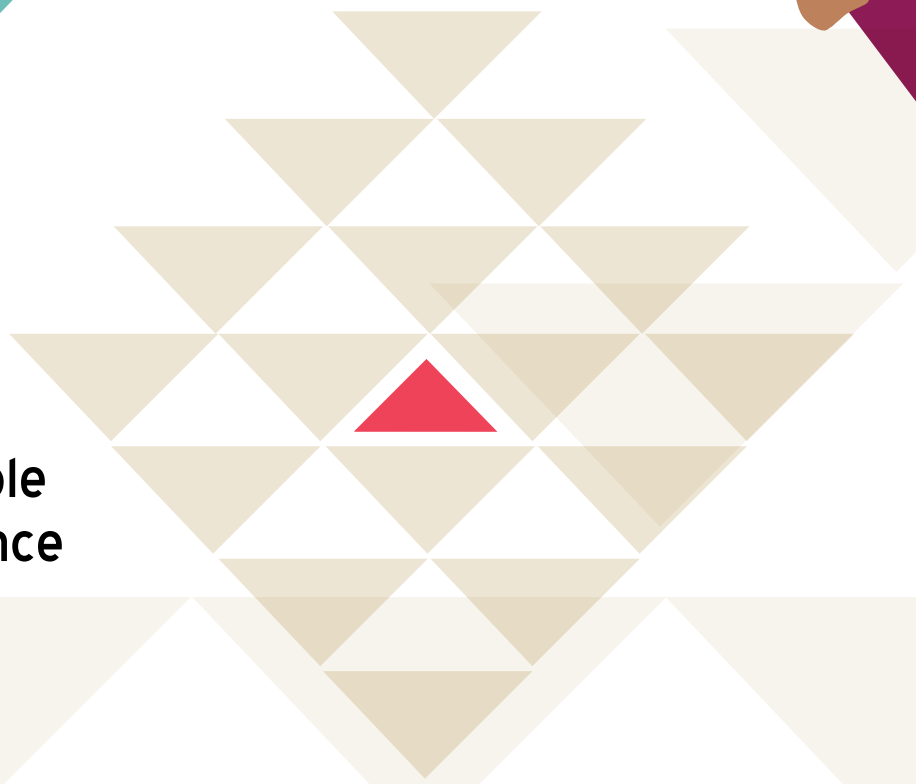
Native Women's
Association of Canada

L'Association des
femmes autochtones
du Canada



Who's Who?

a resource guide for
Indigenous women, girls
and gender diverse people
escaping domestic violence



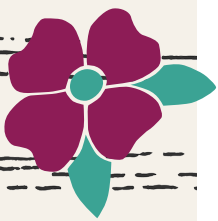


Table of Contents

NEWFOUNDLAND AND LABRADOR

Transition Houses	2
Women's Emergency Shelters	2
Crisis Lines and Programs	2
Information	3

PRINCE EDWARD ISLAND

Transition Houses	4
Women's Emergency Shelters	4
Crisis Lines and Programs	4
Information	5

NOVA SCOTIA

Transition Houses	6
Women's Emergency Shelters	7
Crisis Lines and Programs	7
Information	7

NEW BRUNSWICK

Transition Houses	8
Crisis Lines and Programs	9
Information	9

QUEBEC

Transition Houses	10
Women's Emergency Shelters	11
Crisis Lines and Programs	13
Information	13

ONTARIO

Transition Houses	16
Women's Emergency Shelters	19
Crisis Lines and Programs	20
Information	21

MANITOBA

Transition Houses	22
Women's Emergency Shelters	23
Crisis Lines and Programs	23
Information	23

SASKATCHEWAN

Transition Houses	24
Women's Emergency Shelters	25
Crisis Lines and Programs	25
Information	26

ALBERTA

Transition Houses	28
Women's Emergency Shelters	29
Crisis Lines and Programs	29
Information	30

BRITISH COLUMBIA

Transition Houses	32
Women's Emergency Shelters	34
Crisis Lines and Programs	35
Information	36

YUKON

Transition Houses	38
Women's Emergency Shelters	38
Crisis Lines and Programs	38
Information	38

NORTHWEST TERRITORIES

Transition Houses	40
Women's Emergency Shelters	40
Crisis Lines and Programs	40
Information	40

NUNAVUT

Transition Houses	42
Women's Emergency Shelters	42
Crisis Lines and Programs	42
Information	42

NATIONAL

Information	44
-------------------	----



NEWFOUNDLAND AND LABRADOR



TRANSITION HOUSES

Transition houses are safe houses specifically for women and their children who are escaping an abusive relationship.

Carbonear, NL

O'Shaughnessy House
Tel: (709) 596-8709 (24 hours)
Toll Free: 1-888-596-8709

Gander, NL

Cara Transition House
Tel: (709) 256-7707 (24 hours)
Toll Free: 1-877-800-2272 (in province)

Happy Valley - Goose Bay, NL

Libra House
Tel: (709) 896-3014 (24 hours)
Toll Free: 1-877-896-3014 (in province)

Labrador City, NL

Hope Haven
Tel: (709) 944-6900 (24 hours)
Toll Free: 1-888-332-0000 (in province)

Marystown, NL

Grace Sparkes House
Tel: (709) 279-3562 (24 hours)
Toll Free: 1-877-774-4957 (in province)

Nain, NL

Nain Transition House
Tel: (709) 922-1229 (24 hours)
Toll Free: 1-866-922-1230

Natuashish, NL

Natuashish Safe House
Tel: (709) 478-2390 (24 hours, accepts collect calls)

Rigolet - Nunatsiavut, NL

Kirkina House
Tel: (709) 947-3333 (24 hours, accepts collect calls)

St. John's, NL

Iris Kirby House
Tel: (709) 753-1492 (24 hours)
Toll Free: 1-877-753-1492

WOMEN'S EMERGENCY SHELTERS

Emergency shelters are for those who find themselves in need of shelter for a variety of reasons, such as homelessness, mental health issues, or leaving an abusive relationship. The shelters listed below only include emergency shelters for women.

St. John's, NL

Naomi Centre/Stella's Circle
Tel: (709) 579-8641 (24 hours, accepts collect calls)

CRISIS LINES AND PROGRAMS

These services cannot offer shelter, but can offer assistance to a woman escaping an abusive relationship. Services offered can include referrals, emotional support and counselling, support groups, advocacy, or accompaniments.

St. John's, NL

Sexual Assault Crisis Line
Tel: (709) 726-1411 (24 hours)

Corner Brook, NL

Corner Brook Women's Centre
Tel: (709) 639-8522

Gander, NL

Gander Women's Centre
Tel: (709) 256-4395

Happy Valley-Goose Bay, NL

Mokami Women's Centre
Tel: (709) 896-3484

Labrador City, Labrador

Labrador West Women's Centre
Tel: (709) 944-6562

Port Aux Basques, NL

Gateway Women's Centre
Tel: (709) 695-7505 (accepts collect calls)

St. John's, NL

Newfoundland and Labrador Sexual Assault Crisis and Prevention Centre
Toll Free: 1-800-726-2743 (24 hours)

St. John's, NL

St. John's Women's Centre
Tel: (709) 753-0220

Stephenville, NL

Bay St. George Women's Centre
Tel: (709) 643-4444
Toll Free: 1-866-634-4198

INFORMATION

These resources provide useful information for a woman escaping an abusive relationship. Information provided can include family law and legal aid resources, women's resources, and other information related to domestic violence.

Corner Brook, NL

Western Regional Coalition to End Violence
P.O. Box 152, Corner Brook NL, A2H 6C9
Tel: (709) 634-6606
Fax: (709) 634-4197
Toll Free: 1-866-994-6606
Website: www.transitionhouse.ca/wrcev

St. John's, NL

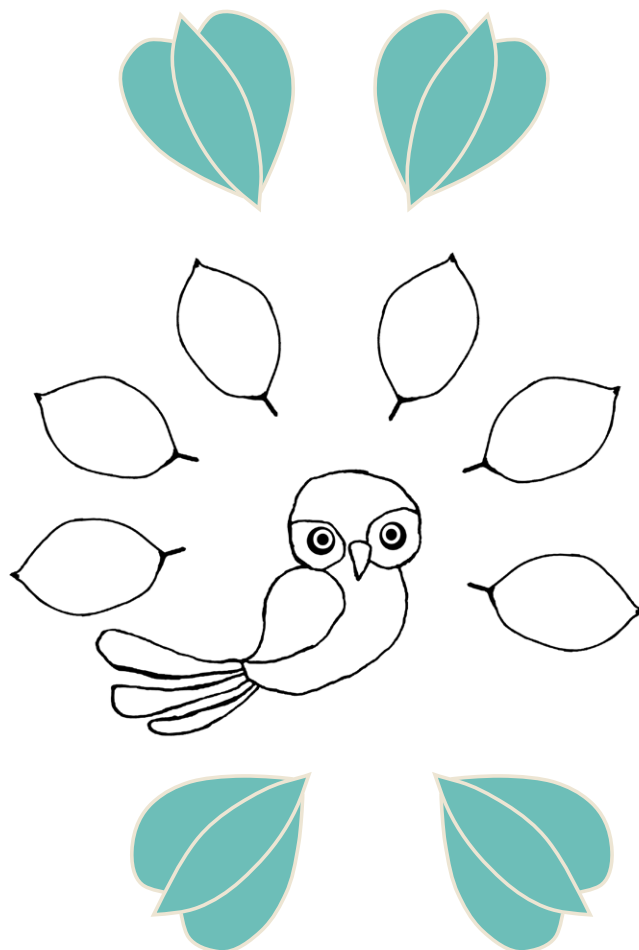
Government of Newfoundland and Labrador, Family Violence Initiative
P.O. Box 8700 West Block, Confederation Building, St. John's NL, A1B 4J6
Tel: (709) 729-5009
Fax: (709) 729-1418
Email: vpi@gov.nl.ca
Website: www.gov.nl.ca/vpi

St. John's, NL

Newfoundland and Labrador Legal Aid Commission
251 Empire Avenue, Suite 300, St. John's NL, A1C 3H9
Tel: (709) 753-7860
Toll Free: 1-800-563-9911 (in province)
Fax: (709) 753-7851
Email: nlac@legalaid.nl.ca
Website: www.legalaid.nl.ca

St. John's, NL

Transition House Association of Newfoundland and Labrador
510 Topsail Road, Suite 113, St. John's NL, A1E 2C2
Tel: (709) 739-6759
Fax: (709) 739-6951
Email: info@thanl.org
Website: www.thanl.org



PRINCE EDWARD ISLAND

TRANSITION HOUSES

Transition houses are safe houses specifically for women and their children who are escaping an abusive relationship.

Charlottetown, PE

Anderson House

Tel: (902) 892-0960 (24 hours)

Toll Free: 1-800-240-9894

WOMEN'S EMERGENCY SHELTERS

Emergency shelters are for those who find themselves in need of shelter for a variety of reasons, such as homelessness, mental health issues, or leaving an abusive relationship. The shelters listed below only include emergency shelters for women.

Lennox Island, PE

Chief Mary Bernard Memorial Women's Shelter

Tel: (902) 831-2332 (24 hours)

Toll Free: 1-855-297-2332

CRISIS LINES AND PROGRAMS

These services cannot offer shelter, but can offer assistance to a woman escaping an abusive relationship. Services offered can include referrals, emotional support and counselling, support groups, advocacy, or accompaniments.

Island Helpline

Toll Free: 1-800-218-2885 (in province)



INFORMATION

These resources provide useful information for a woman escaping an abusive relationship. Information provided can include family law and legal aid resources, women's resources, and other information related to domestic violence.

Charlottetown, PE

Community Legal Information Association
of Prince Edward Island
Royalty Centre, 40 Enman Crescent, Suite 111
Charlottetown PE, C1A 7K4
Tel: (902) 892-0853
Toll Free: 1-800-240-9798 (in Atlantic Canada)
Email: clia@cliapei.ca
Website: www.cliapei.ca

Charlottetown, PE

Government of PEI, Legal Aid
P.O. Box 2000, 40 Great George Street,
Charlottetown PE, C1A 7N8
Tel: (902) 368-6043
Fax: (902) 368-6122
Email: legalaid@gov.pe.ca
Website: www.gov.pe.ca/jps

Charlottetown, PE

PEI Family Violence Prevention Services, Inc.
P.O. Box 964, Charlottetown PE, C1A 7M4
Tel: (902) 894-3354, press 221
Toll Free: 1-800-240-9894 (in province)
Fax: (902) 628-8718
Email: admin@fvps.ca
Website: www.fvps.ca

Charlottetown, PE

Prince Edward Island Rape and Sexual Assault Centre
P.O. Box 1522, 1 Rochford Street, Charlottetown PE, C1A 7N3
Tel: (902) 566-1864
Toll Free: 1-866-566-1864
Fax: (902) 368-2957
Email: admin@peirsac.org
Website: www.peirsac.org

Summerside, PE

Government of PEI, Victims Services
263 Harbour Drive, Suite 19, 2nd Floor,
Summerside PE, C1N 5P1
Tel: (902) 888-8217 or (902) 888-8218
Fax: (902) 888-8410
Website: www.gov.pe.ca/jps/victimservices



NOVA SCOTIA

TRANSITION HOUSES

Transition houses are safe houses specifically for women and their children who are escaping an abusive relationship.

Amherst, NS

Autumn House

Tel: (902) 667-1200 (24 hours, accepts collect calls)

Bridgewater, NS

Harbour House

Tel: (902) 543-3999 (24 hours)

Toll Free: 1-888-543-3999 (in province)

Halifax, NS

Bryony House

Tel: (902) 422-7650 (24 hours, accepts collect calls)

Kentville, NS

Chrysalis House

Tel: (902) 679-1922 (24 hours)

Toll Free: 1-800-264-8682 (in province)

New Glasgow, NS

Tearmann House

Tel: (902) 752-0132 (24 hours)

Toll Free: 1-888-831-0330

Port Hawkesbury, NS

Leeside Transition House

Tel: (902) 625-2444 (24 hours)

Toll Free: 1-800-565-3390 (in province)

Sydney, NS

Willowhouse

Tel: (902) 539-2945 (24 hours)

Toll Free: 1-800-563-2945 (in province)

Truro, NS

Mi'kmaw Family Healing Centre

Millbrook First Nation

Tel: (902) 893-8483 (24 hours)

Toll Free: 1-800-565-4741

Truro, NS

Third Place

Victims of Family Violence Association

Tel: (902) 893-3232 (24 hours)

Toll Free: 1-800-565-4878

Whycocomagh, NS

Mi'kmaw Family Healing Centre

Tel: (902) 756-3440 (24 hours)

Toll Free: 1-800-565-3440

Yarmouth, NS

Juniper House

Tel: (902) 742-8689 (24 hours)

Toll Free: 1-800-266-4087



WOMEN'S EMERGENCY SHELTERS

Emergency shelters are for those who find themselves in need of shelter for a variety of reasons, such as homelessness, mental health issues, or leaving an abusive relationship. The shelters listed below only include emergency shelters for women.

Halifax, NS

Adsum House
Tel: (902) 423-4443 (24 hours)

Halifax, NS

Barry House
Tel: (902) 422-8324 (24 hours)

CRISIS LINES AND PROGRAMS

These services cannot offer shelter, but can offer assistance to a woman escaping an abusive relationship. Services offered can include referrals, emotional support and counselling, support groups, advocacy, or accompaniments.

Province Wide

Nova Scotia Help Line
Tel: (902) 421-1188 (24 hours)
Toll free: 1-877-521-1188

Antigonish, NS

Antigonish Women's Resource Centre
Tel: (902) 863-6221

Halifax, NS

Avalon Sexual Assault Centre
Tel: (902) 422-4240

Truro, NS

Colchester Sexual Assault Centre
Tel: (902) 897-4366

INFORMATION

These resources provide useful information for a woman escaping an abusive relationship. Information provided can include family law and legal aid resources, women's resources, and other information related to domestic violence.

Eskasoni, NS

Mi'kmaw Legal Support Network
P.O. Box 7703, 21 Medicine Trail, Eskasoni NS, B1W 1B2
Toll Free: 1-877-379-2042
Fax: (902) 379-2047
Website: www.mlsn.ca

Halifax, NS

Family Law Nova Scotia
Tel: (902) 424-5232
Website: www.nsfamilylaw.ca

Halifax, NS

Legal Information Society of Nova Scotia
5523 B Young Street, Halifax NS, B3K 1Z7
Tel: (902) 455-3135
Toll Free: 1-800-665-9779
Email: lisns@legalinfo.org
Website: www.legalinfo.org

Halifax, NS

Nova Scotia Advisory Council on the Status of Women
6169 Quinpool Road, Suite 202, Halifax NS, B3J 2T3
Tel: (902) 424-8662
Toll Free: 1-800-565-8662 (in province)
Fax: (902) 424-0573
Email: women@gov.ns.ca
Website: www.women.gov.ns.ca/freedom-from-violence

Halifax, NS

Transition House Association of Nova Scotia
2099 Gottingen Street, Suite 215, Halifax NS, B3K 3B2
Tel: (902) 429-7287
Toll free: 1-855-225-0220 (24 hours)



NEW BRUNSWICK

TRANSITION HOUSES

Transition houses are safe houses specifically for women and their children who are escaping an abusive relationship.

Bathurst, NB

Maison de Passage House Inc.
Tel: (506) 546-9540 (24 hours)

Campbellton, NB

Maison Notre Dame
Tel: (506) 753-4703 (24 hours, accepts collect calls)

Edmundston, NB

Escale Madavic Inc
Tel: (506) 739-6265 (24 hours, accepts collect calls)

Fredericton, NB

Gignoo Transition House Inc.
Tel: (506) 458-1224
Toll Free: 1-800-565-6878 (24 hours, in province)

Fredericton, NB

Women in Transition House Inc.
Tel: (506) 459-2300 (24 hours, accepts collect calls)

Moncton, NB

Crossroads for Women Shelter
Tel: (506) 853-0811 (24 hours, accepts collect calls)

Saint John, NB

Hestia House Inc.
Tel: (506) 634-7570 (24 hours, accepts collect calls)

Ste. Anne de Kent, NB

Serenity House
Tel: (506) 743-1530 (24 hours, accepts collect calls)

St. Stephen, NB

Fundy Regional Transition House
Tel: (506) 466-4485 (24 hours, accepts collect calls)

Sussex, NB

Sussex Vale Transition House
Tel: (506) 432-6999 (24 hours, accepts collect calls)

Tracadie-Sheila, NB

L'Accueil Ste-Famille
Tel: (506) 395-1500 (24 hours, accepts collect calls)

Woodstock, NB

Sanctuary House
Tel: (506) 325-9452 (24 hours)
Toll Free: 1-866-377-3577 (in province)



CRISIS LINES AND PROGRAMS

These services cannot offer shelter, but can offer assistance to a woman escaping an abusive relationship. Services offered can include referrals, emotional support and counselling, support groups, advocacy, or accompaniments.

Fredericton, NB

Fredericton Sexual Assault Crisis Centre
Tel: (506) 454-0437 (24 hours, accepts collect calls)

Shediac, NB

Beauséjour Family Crisis Resource Centre Inc.
Tel: (506) 533-9100 (24 hours, accepts collect calls)

INFORMATION

These resources provide useful information for a woman escaping an abusive relationship. Information provided can include family law and legal aid resources, women's resources, and other information related to domestic violence.

Moncton, NB

Coalition Against Abuse in Relationships
Tel: (506) 855-7222
Website: www.coalitionagainstabuse.com

Fredericton, NB

New Brunswick Legal Aid Services Commission
500 Beaverbrook Court, Suite 501, Fredericton NB, E3B 5X4
Tel: (506) 444-2777
Fax: (506) 462-2290
Email: info@legalaid.nb.ca
Website: www.legalaid.nb.ca

Fredericton, NB

Public Legal Education and Information Service of New Brunswick
P.O. Box 6000, Fredericton NB, E3B 5H1
Tel: (506) 453-5369
Fax: (506) 462-5193
Email: pleisnb@web.ca
Website: www.legal-info-legale.nb.ca
Website: www.thehealingjourney.ca



QUÉBEC

TRANSITION HOUSES

Transition houses are safe houses specifically for women and their children who are escaping an abusive relationship.

Gaspé, QC

Maison d'aide et d'hébergement L'Aidelle
Tel: (418) 368-6883 (24 hours)

Gatineau, QC

L'Autre Chez-Soi inc
Tel: (819) 685-0006 (24 hours, accepts collect calls)

Granby, QC

Maison Alice Desmarais
Tel: (450) 378-9297 (24 hours)

Haute Mauricie, La Tuque, QC

Foyer Asperimowin
Tel: (819) 523-8600 (24 hours, accepts collect calls)

Kuujuug, QC

Tungasuvvik Women's Shelter
Tel: (819) 964-0536 (24 hours)

Kirkland, QC

Refuge pour les femmes de l'ouest de l'île
Tel: (514) 620-4845 (24 hours)

Longueuil, QC

Carrefour pour Elle
Tel: (450) 651-5800

Laval, QC

La Maison le Prelude
Tel: (450) 682-3050 (24 hours, accepts collect call)

Lachute, QC

La citadelle de Lachute
Tel: (450) 562-7797 (24 hours)

Listuguj, QC

Haven House Women's Shelter
Tel: (418) 788-5544 (24 hours)

Maniwaki, QC

Waseya House
Tel: (819) 449-7425 (24 hours, accepts collect calls)

Montréal, QC

Assistance aux femmes de Montreal
Tel: (514) 270-8291 (24 hours)

Montréal, QC

Auberge Shalom pour Femmes
Tel: (514) 731-0833 (24 hours)



Montréal, QC

Auberge Transition pour femmes
Tel: (514) 481-0495 (24 hours)

Montréal, QC

Centre pour victimes d'agression sexuelle de montreal
Tel: (514) 934-4504 (24 hours)

Montréal, QC

Inter Val 1175
Tel: (514) 933-8488 (24 hours)

Montréal, QC

La Maison grise de Montreal
Tel: (514) 722-0009 (24 hours, accepts collect calls)

Montréal, QC

L'escale pour elle
Tel: (514) 493-4004 (24 hours)

Montréal, QC

Le paradoxe
Tel: (514) 637-3529 (24 hours, accepts collect calls)

Montréal, QC

Maison Dalauze
Tel: (514) 640-4211 (24 hours)
Toll Free: 1-866-619-4222

Montréal, QC

Maison Secours aux femmes de Montreal
Tel: (514) 593-6353 (24 hours, accepts collect calls)

Montréal, QC

Maison Flora Tristan
Tel: (514) 939-3465 (24 hours, accepts collect calls)

Montréal, QC

Nouvelle Etape: Maison d'hébergement de 2e etape pour femmes et enfants victimes de violences conjugale
Tel: (514) 328-0705 (24 hours)

Opitciwan, QC

Maison D'Hébergement Nanikew
Tel: (819) 974-1414 (24 hours)

Québec, QC

Maison du Coeur pour femmes
Tel: (418) 841-0011 (24 hours)

Québec, QC

Maison Helene Lacroix
Tel: (418) 527-4682 (24 hours)

Québec, QC

Maison pour femmes immigrantes
Tel: (418) 652-9761(24 hours)

Repentigny, QC

Regard en elle
Tel: (450) 582-6000 (24 hours)
Toll Free: 1-888-582-6005

Salaberry-de-Valleyfield, QC

L'Accueil pour Elle
Tel: (450) 371-4618 (24 hours)

Salluit, QC

Initsiaq Women's Shelter
Tel: (819) 255-8817 (24 hours)

Sept -Iles, QC

Centre Tipinuaikan- Centre d'hébergement pour femmes violentés
Tel: (418) 962-3397 (24 hours, accepts collect calls)
Toll Free: 1-866-962-3397 (in province)

Sherbrooke, QC

Escale de l'Estrie
Tel: (819) 569-3611 (24 hours, accepts collect calls)

Shefferville, QC

Centre Ashpukun Mitshuap
Maison d'hébergement pour femmes victimes de violence
Tel: (418) 585-3419 (24 hours, accepts collect calls)

Terrebonne, QC

Maison d'hebergement Regroup'Elles
Tel: (450) 964-4404 (24 hours)

Thetford Mines, QC

La Gitee
Tel: (418) 335-5551 (24 hours, accepts collect calls)

WOMEN'S EMERGENCY SHELTERS

Emergency shelters are for those who find themselves in need of shelter for a variety of reasons, such as homelessness, mental health issues, or leaving an abusive relationship. The shelters listed below only include emergency shelters for women.

Alma, QC

La Paserelle
Tel: (418) 668-4671(24 hours)

Chelsea, QC

Libere-Elles
Tel: (819) 827-4044 (24 hours)

Chambly, QC

Maison Simone Monet Chartrand
Tel: (450) 658-9780 (24 hours)

Chateauguay, QC

Maison d'hébergement La Re-Source de Chateauguay
Tel: (450) 699-0908
Toll free: 1-877-699-1988

Chicoutimi, QC

Centre féminine du Saguenay
Tel: (418) 549-4343 (24 hours, accepts collect calls)

Chibougameau, QC

Maison d'hébergement l'Aquarelle
Tel: (418) 748-7654 (24 hours)

Estrie, QC

Sejour La Bonne Oeuvre
Tel: (819) 835-9272 (24 hours)

Fort Coulonge, QC

L'Entourelle
Tel: (819) 683-2709 (24 hours, accepts collect calls)
Toll Free: 1-877-663-2709

Huntingdon, QC

Residence Elle du Haut-Saint-Laurent
Tel: (450) 264-2999 (24 hours, accepts collect calls)
Toll Free: 1-877-764-2999

La Baie, QC

Le Rivage de la Baie
Tel: (418) 544-4626 (24 hours, accepts collect calls)
Toll Free: 1-888-226-4626

Levis, QC

La Jonction pour Elles
Tel: (418) 833-8002

Longuiel, QC

Pavillon Marguerite de Champlain
Tel: (450) 656-1946 (24 hours, accepts collect calls)

Maniwaki

Halte-Femme Haute Gatineau
Tel: (819) 449-4545 (24 hours, accepts collect calls)

Montréal, QC

Auberge Madeleine
Tel: (514) 597-1499 (24 hours)

Montréal, QC

Centre de preventions des agressions de Montreal
Tel: (514) 284-1212 (24 hours)

Montréal, QC

Foyer pour femmes autochtones de Montréal/Native
Women's Shelter of Montréal
Tel: (514) 933-4688 (24 hours)
Toll Free: 1-866-403-4688

Montréal, QC

L'Armee du Salut-Abri d'Espoir
Tel: (514) 934-5615

Montréal, QC

L'arret-Source Inc.
Tel: (514) 383-2335

Montréal, QC

La Dauphinelle
Tel: (514) 598-7779 (24 hours)

Montréal, QC

Les Logis Rose-Virginie
Habitation Rosemont
Tel: (514) 593-8204 or (514) 374-5811 (24 hours)

Montréal, QC

Les Logis Rose-Virginie
Habitation Pelletier
Tel: (514) 525-3267 or (514) 525-5036 (24 hours)

Montréal, QC

Le Chainon
Tel: (514) 845-0151 (24 hours, accepts collect calls)

Montréal, QC

Les Maisons de L'Ancre
Tel: (514) 374-5573

Montréal, QC

Foyer pour femmes autochtones de Montréal/Native
Women's Shelter of Montréal
Tel: (514) 933-4688 (24 hours)
Toll Free: 1-866-403-4688

Montréal, QC

Maison Marguerite
Tel: (514) 932-2250 (24 hours)

Montréal, QC

Maison du Reconfort
Tel: (514) 768-8648

Montréal, QC

Multi-Femmes Deux
Tel: (514) 524-5776

Montréal, QC

Transit 24 Inc.
Tel: (514) 383-4994

Québec, QC

Maison des femmes de Québec
Tel: (418) 552-00429 (24 hours)
Toll free: 1-800-363-9010

Saint-Augustin-de-Desmaures, QC

Residence la Colombiere
Tel: (418) 874-0222 (24 hours)

Sorel Tracy, QC

Maison La Source
Tel: (450) 743-2821 (24 hours)

Ste-Therese-de-Blainville, QC

Le Mitan
Tel: (450) 435-3651

St-Raymond, QC

Mirepi, maison d'hébergement inc
Tel: (418) 337-4811 (24 hours)
Toll free: 1-800-361-4811

Trois-Rivieres, QC

Maison Le FAR 1985 Inc.
Tel: (819) 378-2990 (24 hours)

CRISIS LINES AND PROGRAMS

These services cannot offer shelter, but can offer assistance to a woman escaping an abusive relationship. Services offered can include referrals, emotional support and counselling, support groups, advocacy, or accompaniments.

Province Wide

Regroupement Québécois des CALACS/Centre for Relief of Sexual Assaults
Toll Free: 1-888-933-9007 (24 hours)

Province Wide

SOS Violence Conjugale
Tel: (514) 873-9010 (24 hours)
Toll Free: 1-800-363-9010 (in province)

Montréal, QC

Agression Sexuelle/ Sexual Assault Crisis Line
Tel: (514) 933-9007 (24 hours)
Toll Free: 1-888-933-9007

Montréal, QC

Femme Averties/Women Aware
Tel: (514) 489-1110
Toll Free: 1-866-489-1110 (in province)

INFORMATION

These resources provide useful information for a woman escaping an abusive relationship. Information provided can include family law and legal aid resources, women's resources, and other information related to domestic violence.

Province Wide

Crime Victims Assistance Centre
Toll Free: 1-866-532-2822 (in province)
Website: www.cavac.qc.ca

Province Wide

Government of Quebec
www.domesticviolence.gouv.qc.ca

Kuujuaq, QC

Kativik Regional Government, Victim Services
P.O. Box 9, Kuujuaq QC, J0M 1C0
Tel: (819) 964-2961
Toll Free: 1-877-964-2961
Fax: (819) 964-2956
Email: info@krg.ca
Website: www.krg.ca/en/services-to-victims-contacts

Montréal, QC

Commission des services juridiques/Legal Aid
C.P. 123, Station Desjardins, Montréal QC, H5B 1B3
Tel: (514) 873-3562
Fax: (514) 864-2351
Email: info@csj.qc.ca
Website: www.csj.qc.ca

Montréal QC

Fédération des maisons d'hébergement pour femmes
C.P. 55036, Succursale Maisonneuve, Montréal QC, H1W 0A1
Tel: (514) 878-9757
Fax: (514) 878-9755
Email: info@fede.qc.ca
Website: www.fede.qc.ca

Montréal, QC

La Marie Debout
4001, rue Sainte-Catherine Est, Montréal QC, H1W 2G7
Tel: (514) 597-2311
Fax: (514) 564-4211

Montréal, QC

Maison des femmes sourdes de Montréal
4855, rue Boyer, bureau 105, Montréal QC, H2J 3E6
Tel: (514) 255-5680 or (514) 255-6376
Fax: (514)-255-3770
Email: femmessourdes@mfsm.ca
Website: www.mfsm.org

Montréal, QC

Regroupement québécois des CALACS/ Center for Relief of Sexual Assaults

C.P. 56528, Succursale Ontario, Montréal QC, H1W 3Z3

Tel: (514) 529-5252

Exterior: 1-877-717-5252

Fax: (514) 529-5255

Email: info@rqcalacs.qc.ca

Website: www.rqcalacs.qc.ca

Montréal, QC

Regroupement des maisons pour femmes victimes de violence conjugale

C.P. 55005, CFP Notre-Dame, 11, rue Notre-Dame Ouest, Montréal QC H2Y 4A7

Tel: (514) 878-9134

Fax: (514) 878-9136

Email: info@maisons-femmes.qc.ca

Website: www.maisons-femmes.qc.ca

Wendake, QC

Native Para-Judicial Services of Quebec/Aboriginal Courtworker Program

190, Chef Max Gros Louis Street, Wendake QC, GOA 4V0

Tel: (418) 847-2094

Fax: (418) 847-5799

Email: info@spaq.qc.ca

Website: www.spaq.qc.ca





ONTARIO



TRANSITION HOUSES

Transition houses are safe houses specifically for women and their children who are escaping an abusive relationship.

Alliston, ON

My Sister's Place
Tel: (705) 435-3835 (24 hours)
Toll Free: 1-800-461-5419

Atikokan, ON

Rainy River District Women's Shelter of Hope
Tel: (807) 597-6908
Toll Free: 1-800-465-3348 (24 hours)

Barrie, ON

Women & Children's Shelter of Barrie
Tel: (705) 728-2544 (24 hours, accepts collect calls)
Toll Free: 1-800-461-1716

Belleville, ON

Three Oaks Shelter
Tel: (613) 966-3074 (24 hours)
Toll Free: 1-800-267-0533

Big Trout Lake, ON

Equay Wuk Women's Shelter
Tel: (807) 537-2242 (24 hours)

Bowmanville, ON

Bethesda House
Tel: (905) 623-6050 (24 hours)
Toll Free: 1-800-338-3397

Bracebridge, ON

Muskoka Interval House
Tel: (705) 645-4461 (24 hours)
Toll Free: 1-800-461-1740

Brantford, ON

Nova Vita
Tel: (519) 752-4357 (24 hours, accepts collect calls)

Brockville, ON

Leeds & Grenville Interval House
Tel: (613) 342-8815 (24 hours)
Toll Free: 1-800-267-4409

Burlington, ON

Halton Women's Place South Shelter
Tel: (905) 332-1593 (24 hours)

Cambridge, ON

Haven House
Tel: (519) 653-2289 (24 hours)
Toll Free: 1-800-410-4482

Carleton Place, ON

Lanark County Interval House
Tel: (613) 257-5960 (24 hours)
Toll Free: 1-800-267-7946

Chatham, ON

Chatham Kent Women's Centre
Tel: (519) 354-6360 (24 hours)
Toll Free: 1-800-265-0598

Cobourg, ON

Cornerstone Family Violence Prevention Centre
Tel: (905) 372-0746 (24 hours)
Toll Free: 1-800-263-3757

Collingwood, ON

My Friend's House
Tel: (705) 444-2511 (24 hours)
Toll Free: 1-800-265-2511

Cornwall, ON

Maison Baldwin House
Tel: (613) 938-2958 (24 hours)
Toll Free: 1-800-267-1744

Dryden, ON

Hoshizaki House
Tel: (807) 223-3226 (24 Hours)
Toll Free: 1-800-465-7221 (in province)

Durham/Clarington Regions, ON

Herizon House
Toll Free: 1-866-437-4066 (24 hours)

Elliot Lake, ON

MapleGate House for Women
Tel: (705) 461-9868 (24 hours)
Toll Free: 1-800-461-4623

Etobicoke, ON

Ernestine's Women's Shelter
Tel: (416) 746-3701, press 0 (24 hours)
Toll Free: 1-866-863-0511 (in province)

Etobicoke, ON

Women's Habitat
Tel: (416) 252-5829 (24 hours, accepts collect calls)

Geraldton, ON

Geraldton Family Resource Centre
Tel: (807) 854-1571 (24 hours)
Toll Free: 1-800-265-7317

Guelph, ON

Marianne's Place
Tel: (519) 836-5710 (24 hours)
Toll Free: 1-800-265-7233

Haliburton, ON

Haliburton Emergency Rural SafeSpace
Tel: (705) 286-6442
Toll Free: 1-800-461-7656 (24 hours)

Hamilton, ON

Hamilton Interval House
Tel: (905) 387-8881 (24 hours, accepts collect calls)

Hamilton, ON

Inasmuch House
Tel: (905) 529-8600 (24 hours, accepts collect calls)

Hamilton, ON

Martha House
Tel: (905) 523-6277 (24 hours, accepts collect calls)

Hamilton, ON

Native Women's Centre
Tel: (905) 664-1114 (24 hours)
Toll Free: 1-888-308-6559

Hawkesbury, ON

Maison House Interlude
Tel: (613) 632-1131 (24 hours)
Toll Free: 1-800-267-4101

Huntsville, ON

Chrysalis
Tel: (705) 789-8488 (24 hours)
Toll Free: 1-866-789-8488

Kenora, ON

Saakaate House
Tel: (807) 468-5491
Toll Free: 1-800-465-1117 (24 hours)

Kingston, ON

Kingston Interval House
Tel: (613) 546-1777 (24 hours)
Toll Free: 1-800-267-9445

Kitchener, ON

Anselma House
Tel: (519) 741-9184 (24 hours)
Toll Free: 1-800-410-4482

London, ON

Women's Community House
Tel: (519) 642-3000 (24 hours)
Toll Free: 1-800-265-1576

London, ON

Zhaawanong Shelter
Tel: (519) 432-0122 (24 hours)
Toll Free: 1-800-605-7477

Lindsay, ON

Victoria's Women's Shelter
Tel: (705) 878-3662 (24 hours)
Toll Free: 1-800-565-5350

Marathon, ON

Marjorie House
Tel: (807) 229-2222 (24 hours)
Toll Free: 1-800-465-3307 (in province, accepts collect calls)

Milton, ON

Halton Women's Place North Shelter
Tel: (905) 878-8970 (24 hours, accepts collect calls)

Mindemoya, ON

Manitoulin Family Resources Inc.
Tel: (705) 377-5160 (24 hours)
Toll Free: 1-800-465-6788 (in province)

Mishkeegogamang, ON

Mishkeegogamang Safe House
Tel: (807) 928-2407 (24 hours, accepts collect calls)

Mississauga, ON

Interim Place
Tel: (905) 403-0864 (24 hours)
Toll Free: 1-855-676-8515

Mississauga First Nation, ON

APO-WAY-A-IN WIGAMIN Mississauga First Nation
Women's Shelter
Tel: (705) 356-7800 (24 hours)
Toll Free: 1-800-461-2232

Moosonee, ON

O mushkegiskwew House
Tel: (705) 336-2456 (24 hours, accepts collect calls)

Napanee, ON

Lennox & Addington Interval House
Tel: (613) 354-1010 (24 hours, accepts collect calls)
Toll Free: 1-800-667-1010

Napean, ON

Nelson House (24 hours, accepts collect calls)
Tel: (613) 225-3129

Niagara Falls, ON

Nova House
Tel: (905) 788-0113 or (905) 356-5800
Toll Free: 1-800-263-4944 (24 hours)

North Bay, ON

Nipissing Transition House
Tel: (705) 476-2429 (24 hours, accepts collect calls)

North Bay, ON

Ojibway Women's Lodge
Tel: (705) 472-3321 (24 hours)
Toll Free: 1-800-387-2465

Ohsweken, ON

Etiya`takenhas Shelter
Tel: (519) 445-4324 (24 hours)

Orangeville, ON

Family Transition Place
Tel: (519) 941-4357 (24 hours)
Toll Free: 1-800-265-9178

Orillia, ON

Green Haven Shelter for Women
Tel: (705) 327-7319 (24 hours, accepts collect calls)
Toll Free: 1-888-285-6958

Oshawa, ON

Y's Wish Shelter
Tel: (905) 576-2997 (24 hours, accepts collect calls)
Toll-free: 1-800 576 2997

Ottawa, ON

Interval House of Ottawa
Tel: (613) 234-5181 (24 hours, accepts collect calls)

Ottawa, ON

La Présence
Tel: (613) 241-8297

Ottawa, ON

Maison d'amitié
Toll Free: 1-877-336-2433 (24 hours)

Ottawa, ON

Minwaashin Lodge
Tel: (613) 789-1141 (24 hours)
Toll Free: 1-855-789-9433

Oshawa, ON

The Denise House
Tel: (905) 782-7311 (24 hours)
Toll Free: 1-800-263-3725

Pembroke, ON

Bernadette McCann House
Tel: (613) 732-3131 (24 hours, accepts collect calls)
Toll Free: 1-800-267-4930

Peterborough, ON

Crossroads Shelter
Tel: (705) 743-4135 (24 hours, accepts collect calls)
Toll Free: 1-800-461-7656

Red Lake, ON

New Starts for Women
Tel: (807) 727-3303 (24 hours)
Toll Free: 1-800-565-5368

Richmond Hill, ON

Yellow Brick House
Tel: (905) 727-1944 (24 hours)
Toll Free: 1-800-263-3247

Roseneath, ON

Anishnaabe Kwewag Gamig
Tel: (905) 352-3708 (24 hours)
Toll Free: 1-800-388-5171

Sarnia, ON

Women's Interval Home
Tel: (519) 336-5200 (24 hours)
Toll Free: 1-800-265-1412

Sault Ste. Marie, ON

Nimkii-Naabkawagan Batchewana Family Crisis Shelter
Tel: (705) 941-9054 (24 hours)
Toll Free: 1-866-266-1466

Sault Ste. Marie, ON

Women in Crisis (Algoma) Inc.
Tel: (705) 759-1230 (24 hours)
Toll Free: 1-877-759-1230

Scarborough, ON

Julliette's Place Homeward Family Shelter
Tel: (416) 724-1316 (24 hours, accepts collect calls)

Sioux Lookout, ON

First Step Women's Shelter
Tel: (807) 737-1438
Toll Free: 1-800-465-3623 (24 hours)

Southampton, ON

Kabaeshiwim Respite Women's Shelter
Tel: (519) 797-3677 (24 hours, accepts collect calls)

Southwold, ON

Onyota'a:ka Family Healing Lodge
Tel: (519) 652-0657 (24 hours, accepts collect calls)

St. Catharines, ON

Gillian's Place
Tel: (905) 684-8331 (24 hours, accepts collect calls)

St. Thomas, ON

Women's Place
Tel: (519) 633-0155 (24 hours, accepts collect calls)
Toll Free: 1-800-265-4305

Stratford, ON

Optimism Place
 Tel: (519) 271-5550 (24 hours)
 Toll Free: 1-800-265-8598

Sturgeon Falls, ON

Sturgeon Falls Family Resource Centre
 Tel: (705) 753-1154 (24 hours, accepts collect calls)

Sudbury, ON

YWCA Geneva House
 Tel: (705) 674-2210 (24 hours)
 Toll Free: 1-800-461-0133

Sutton, ON

Sandgate Women's Shelter of York Region Inc.
 Toll Free: 1-800-661-8294 (24 hours, accepts collect calls)

Thunder Bay, ON

Beendigen Native Women's Crisis Home
 Tel: (807) 346-4357 (24 hours)
 Toll Free: 1-888-200-9997

Thunder Bay, ON

Faye Peterson Transition House
 Tel: (807) 345-0450 (24 hours)
 Toll Free: 1-800-465-6971

Timmins, ON

H.E.R. PLACE Women's Shelter
 Tel: (705) 264-7233 (24 hours)
 Toll Free: 1-855-827-7233

Timmins, ON

Tranquility House Women's Shelter
 Tel: (705) 273-2339 (24 hours)
 Toll Free: 1-866-993-2339

Toronto, ON

Anduhyaun Shelter
 Tel: (416) 920-1492, press 221 (24 hours)

Toronto, ON

Interval House
 Tel: (416) 924-1491 (24 hours, accepts collect calls)

Toronto, ON

Redwood Shelter
 Tel: (416) 533-8538 (24 hours, accepts collect calls)

Toronto, ON

YWCA Arise Women's Shelter
 Tel: (416) 929-3316 (24 hours)

Toronto, ON

YWCA Women's Shelter
 Tel: (416) 693-7342 (24 hours)

Tyendinaga Mohawk Territory, ON

Red Cedars Shelter
 Tel: (613) 967-2003

Vaughan, ON

Empowerment through Achievement Vaughan
 Tel: (905) 893-8887 (24 hours)
 Toll Free: 1-877-382-1888

Walpole Island First Nation, ON

Three Fires Ezhignowenmindwaa Women's Shelter
 Tel: (519) 627-3635 (24 hours, accepts collect calls)

Wawa, ON

Chadwic Home
 Tel: (705) 856-2848 (24 hours)
 Toll Free: 1-800-461-2242

Welland, ON

Serenity Place
 Tel: (905) 788-0113 (24 hours)
 Toll Free: 1-800-263-4944

Whitefish Bay First Nation, ON

Naotkamegwanning Women's Shelter
 Tel: (807) 226-2603 (24 hours, accepts collect calls)

Winchester, ON

Naomi's Family Resource Centre
 Tel: (613) 774-2838
 Toll Free: 1-800-267-0395

WOMEN'S EMERGENCY SHELTERS

Emergency shelters are for those who find themselves in need of shelter for a variety of reasons, such as homelessness, mental health issues, or leaving an abusive relationship. The shelters listed below only include emergency shelters for women.

Dawn House

Kingston, ON
 Tel: (613) 545-1379 (24 hours, accepts collect calls)

Goderich, ON

Huron Women's Shelter
 Tel: (519) 524-5333
 Toll Free: 1-800-265-5506 (24 hours)

Haileybury, ON

Pavilion Women's Centre
 Toll Free: 1-888-871-9090 (24 hours)

Hamilton, ON

Mary's Place
 Tel: (905) 523-6277 (24 hours, accepts collect calls)

Kingston, ON

Dawn House

Tel: (613) 545-1379 (24 hours, accepts collect calls)

Kitchener, ON

YWCA Emergency Shelter Services

Tel: (519) 744-0120 (24 hours)

Lethinisten:ha Women's Shelter

Akwasasne, ON

Tel: (613) 937-4322

Toll Free: 1-800-480-4208 (24 hours)

London, ON

Women's Community House

Tel: (519) 642-3000 (24 hour)

Toll Free: 1-800-265-1576

Mattawa, ON

Mattawa Women's Resource Centre

Tel: (705) 744-5567 (24 hours, accepts collect calls)

Ottawa, ON

Outreach Emergency Shelter for Women

Tel: (613) 789-4179 (24 hours, accepts collect calls)

Ottawa, ON

St. Joe's Women's Centre

Tel: (613) 231-6722

Ottawa, ON

Tewegan Housing for Aboriginal Youth

Tel: (613) 233-0672 (24 hours)

Owen Sound, ON

Women's House Serving Bruce & Grey

Tel: (519) 396-9655 (24 hours)

Toll Free: 1-800-265-3026

Parry Sound, ON

Esprit Place

Tel: (705) 746-4800 (24 hours, accepts collect calls)

Toll Free: 1-800-461-1707

Richmond Hill, ON

Sandgate Women's Shelter of York Region Inc.

Tel: (905) 787-8604

Toll Free: 1-800-661-8294

Sutton West, ON

Jackson's Point Shelter

Tel: (905) 772-3220

Toll Free: 1-800-661-8294

Toronto, ON

Elisa House

Tel: (416) 259-2528 (24 hours, accepts collect calls)

Toronto, ON

Fred Victor Women's Hostel

Tel: (416) 368-2642 (24 hours, accepts collect calls)

Toronto, ON

Nellie's

Tel: (416) 461-1084 (24 hours, accept collect calls)

Toronto, ON

Mary's Home

Tel: (416) 595-1578 (24 hours, accepts collect calls)

CRISIS LINES AND PROGRAMS

These services cannot offer shelter, but can offer assistance to a woman escaping an abusive relationship. Services offered can include referrals, emotional support and counselling, support groups, advocacy, or accompaniments.

Province Wide

Assaulted Women's Helpline

Tel: (416) 863-0511

Toll Free: 1-866-863-0511 (24 hours)

Province Wide

Femaide for Francophone Services

Toll Free: 1-877-336-2433 (24 hours)

Northern Ontario

Talk4Healing

Toll Free: 1-855-554-4325

Cornwall, ON

Sexual Assault Support Services for Women

Toll Free: 1-866-863-0511 (24 hours)

Kenora, ON

Kenora Sexual Assault Centre

Tel: (807) 468-7233 (24 hours, accepts collect calls)

Toll Free: 1-800-565-6161

London, ON

London Abused Women's Centre

Tel: (519) 432-2204 (accepts collect calls)

Ottawa, ON

Centre D'aide et de Lutte Contre les Agressions à Caractère Sexuel

Tel: 1-877-336-2433 (24 hours)

Ottawa, ON

The Sexual Assault Support Center of Ottawa

Tel: (613) 234-2266

Parry Sound, ON

Muskoka/Parry Sound Sexual Assault Services

Toll Free: 1-800-461-2929

Pembroke, ON

Women's Sexual Assault Centre of Renfrew County
 Toll Free: 1-800-663-3060
 Toll Free: 1-800-461-9018

Picton, ON

Alternatives for Women
 Tel: (613) 476-2787 (24 hours)
 Toll Free: 1-877-499-6636

Scarborough, ON

Dr. Roz's Healing Place
 Tel: (416) 264-4357 (24 hours, accepts collect calls)

Timmins, ON

Timmins & Area Women in Crisis
 Tel: (705) 268-8380 (24 hours)
 Toll Free: 1-877-268-8380

Toronto, ON

Toronto Rape Crisis Centre
 Tel: (416) 597-8808 (24 hours)
 Toll Free: 1-855-333-3384

Whitby, ON

Durham Rape Crisis Centre
 Tel: (905) 668-9200 (24 hours, accepts collect calls)

York, ON

Yorktown Shelter for Women
 Tel: (416) 394-2999 (24 hours)

INFORMATION

These resources provide useful information for a woman escaping an abusive relationship. Information provided can include family law and legal aid resources, women's resources, and other information related to domestic violence.

Province Wide

211 Ontario
 Tel: 211
 Email: officeadmin@211ontario.ca
 Website: www.211ontario.ca

Province Wide

Family Law Education for Women
 Email: admin@onefamilylaw.ca
 Website: www.onefamilylaw.ca

Province Wide

Ontario Coalition of Rape Crisis Centres
 Website: ocrcc.wildapricot.org

Toronto, ON

Community Legal Education of Ontario
 180 Dundas Street West, Suite 506, Toronto ON, M5G 1Z8
 Tel: (416) 408-4420
 Fax: (416) 408-4424
 Email: info@cleo.on.ca
 Website: www.cleo.on.ca

Toronto, ON

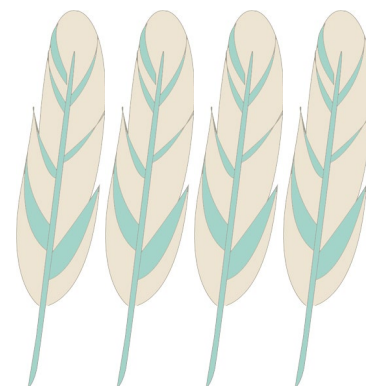
Government of Ontario, Legal Aid
 20 Dundas Street West, Suite 201, Toronto ON, M5G 2H1
 Tel: (416) 979-1446
 Toll Free: 1-800-668-8258
 Fax: (416) 979-8669
 Email: info@lao.on.ca
 Website: www.legalaid.on.ca

Toronto, ON

Kanawayhitowin: Taking Care of Each Other's Spirit
 219 Front Street East, Toronto ON, M5A 1E8
 Tel: (416) 956-7575 ext.233
 Fax: (416) 956-7577
 Email: kanawayhitowin@ofifc.org
 Website: www.kanawayhitowin.ca

Toronto, ON

Ontario Women's Directorate
 777 Bay Street, 6th Floor, Toronto ON, M7A 2J4
 Tel: (416) 314-0300
 Toll Free: 1-866-510-5902
 Fax: (416) 314-0247
 Email: owd@ontario.ca
 Website: www.women.gov.on.ca



MANITOBA

TRANSITION HOUSES

Transition houses are safe houses specifically for women and their children who are escaping an abusive relationship.

Brandon, MB

YWCA Westman Women's Shelter
Tel: (204) 727-3644 (24 hours)

Dauphin, MB

Parkland Crisis Centre & Women's Shelter
Tel: (204) 638-9484 (24 hours)

Flin Flon, MB

Women's Safe Haven Resource Service Inc.
Tel: (204) 681-3105

Norway House, MB

Jean Folster Place
Tel: (204) 359-4400 (24 hours, accepts collect calls)

Portage La Prairie, MB

Portage Family Abuse Prevention Centre
Tel: (204) 239-5233

Pukatawagan, MB

Mamawehetowin Women's Crisis Centre
Tel: (204) 553-2198
Toll Free: 1-866-432-1041

Selkirk, MB

Nova House
Tel: (204) 482-1200

Shamattawa, MB

Wechin Waskigan Crisis Centre
Tel: (204) 565-2548 (24 hours, accepts collect calls)

Steinbach, MB

Agape House
Tel: (204) 346-0028

The Pas, MB

Aurora House
Tel: (204) 623-5497

Thompson, MB

Thompson Crisis Centre
Tel: (204) 778-7273

Winkler, MB

Genesis House
Tel: (204) 325-9800

Winnipeg, MB

Ikwe-Widdjiitiwin
Tel: 1-800-362-3344 (24 hours)



Winnipeg, MB

Native Women's Transition Centre
Tel: (204) 989-8240 (24 hours, accepts collect calls)

WOMEN'S EMERGENCY SHELTERS

Emergency shelters are for those who find themselves in need of shelter for a variety of reasons, such as homelessness, mental health issues, or leaving an abusive relationship. The shelters listed below only include emergency shelters for women.

Winnipeg, MB

North End Women's Centre
Tel: (204) 589-7347

Winnipeg, MB

Salvation Army
Tel: (204) 946-9402

CRISIS LINES AND PROGRAMS

These services cannot offer shelter, but can offer assistance to a woman escaping an abusive relationship. Services offered can include referrals, emotional support and counselling, support groups, advocacy, or accompaniments.

Province Wide

Domestic Violence Crisis Line
Toll Free: 1-877-977-0007 (24 hours, in province)

Ashern, MB

Lakeshore Women's Resource Centre
Tel: (204) 768-3016

Thompson, MB

Thompson Crisis Centre
Tel: (204) 778-7273 (24 hours)
Toll Free: 1-800-442-0613

Winnipeg, MB

Fort Garry Women's Centre
Tel: (204) 477-1123

Winnipeg, MB

Klinik Community Health Centre
Tel: (204) 786-8686 (24 hours)
Toll free: 1-888-322-3019

Winnipeg, MB

North Point Douglas Women's Centre
Tel: (204) 947 0321

Winnipeg, MB

Sexual Assault Crisis Centre
Tel: (204) 786-8631 (24 hours)
Toll Free: 1-888-292-7565

Winnipeg, MB

West Central Women's Resource Centre
Tel: (204) 774-8975

INFORMATION

These resources provide useful information for a woman escaping an abusive relationship. Information provided can include family law and legal aid resources, women's resources, and other information related to domestic violence.

Province Wide

Manitoba Association of Women's Shelters
Tel: (204) 430-4346
Email: maws@maws.mb.ca
Website: www.maws.mb.ca

Winnipeg, MB

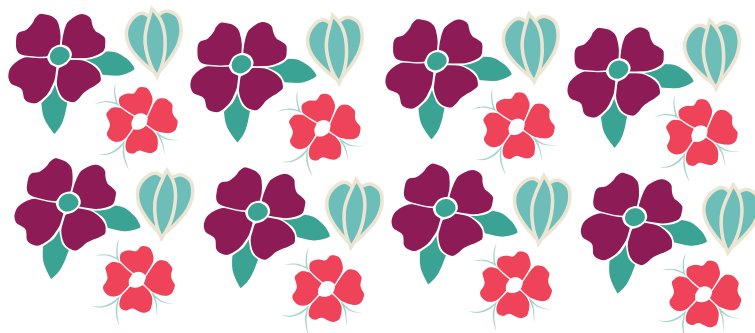
Aboriginal Court Worker Program
405 Broadway, Suite 235, Winnipeg MB, R3C 3L6
Tel: (204) 945-3909
Website: www.gov.mb.ca/justice/court/aboriginalcourtworkers.html

Winnipeg, MB

Government of Manitoba, Legal Aid
294 Portage Avenue, 402, Winnipeg MB, R3C 0B9
Tel: (204) 985-8500
Toll Free: (800) 261-2960
Fax: (204) 944-8582
Website: www.legalaid.mb.ca

Winnipeg, MB

NorWest Co-op Community Health, A Woman's Place
323 Portage Avenue, Suite 200, Winnipeg MB
Tel: (204) 940-6624
Email: iwcs@norwesthealth.ca
Website: www.norwestcoop.ca/mind-spirit/a-womans-place



SASKATCHEWAN

TRANSITION HOUSES

Transition houses are safe houses specifically for women and their children who are escaping an abusive relationship.

Fort Qu'Appelle, SK

Qu'Appelle Haven Safe Shelter
Tel: (306) 332-6881 (24 hours)
Toll Free: 1-888-332-7233

La Ronge, SK

Piwapan Women's Centre
Tel: (306) 425-4090 (24 hours)

Lloydminster, SK

Lloydminster Interval Home
Tel: (780) 875-0966 (24 hours)

Meadow Lake, SK

Waskoosis Safe House
Tel: (306) 236-5570 (24 Hours)

Moose Jaw, SK

Moose Jaw Transition House
Tel: (306) 693-6511 (24 hours, accepts collect calls)

North Battleford, SK

Battlefords Interval House Society
Tel: (306) 445-2742 (24 hours)

Regina, SK

Regina Transition House
Tel: (306) 569-2292 (24 hours, accepts collect calls)

Regina SK

Wichihik Iskwewak Safe House
Tel: (306) 543-0493 (24 hours, accepts collect calls)

Regina, SK

YWCA Isabel Johnson Shelter
Tel: (306) 525-2141 (24 hours)

Saskatoon, SK

Saskatoon Interval House
Tel: (306) 244-0185 (24 hours)
Toll Free: 1-800-338-0880 (in province)

Southwest, SK

Southwest Crisis Services
Tel: (306) 778-3692 or (306) 778-3833 (24 hours)
Toll Free: 1-800-567-3334

Yorkton, SK

Saskatchewan Yorkton Tribal Council Project Safe Haven
Tel: (306) 782-0676 (24 hours)
Toll Free: 1-877-444-2836



Yorkton, SK

Shelwin House
 Tel: (306) 783-7233 (24 hours)
 Toll Free: 1-888-783-3111

WOMEN'S EMERGENCY SHELTERS

Emergency shelters are for those who find themselves in need of shelter for a variety of reasons, such as homelessness, mental health issues, or leaving an abusive relationship. The shelters listed below only include emergency shelters for women.

Prince Albert, SK

YWCA Prince Albert
 Tel: (306) 763-8571 (24 hours)

Saskatoon, SK

YWCA of Saskatoon Crisis Shelter & Residence
 Tel: (306) 244-2844 (24 hours)

CRISIS LINES AND PROGRAMS

These services cannot offer shelter, but can offer assistance to a woman escaping an abusive relationship. Services offered can include referrals, emotional support and counselling, support groups, advocacy, or accompaniments.

Battleford, SK

Sexual Assault Services of Saskatchewan
 Toll Free: 1-866-567-0055 (24 hours)

Carlyle, SK

Envision Counselling & Support Centre Inc.
 Tel: (306) 453-2405
 Toll Free: 1-800-214-7083 (24 hours, accepts collect calls)

Estevan, SK

Battlefords and Area Sexual Assault Centre
 Tel: (306) 637-4004
 Toll Free: 1-800-214-7083 (24 hours, accepts collect calls)

Kindersley, SK

West Central Crisis & Family Support Centre Inc.
 Tel: (306) 933-6200 (24 hours)

Kindersley, SK

Sexual Assault Services of Saskatchewan
 Tel: (306) 463-1860 (24 hours)

Lloydminster, SK

Lloydminster Sexual Assault and Information Centre
 Tel: (306) 825-8255 (24 hours)

Melfort, SK

North East Outreach and Support Services
 Tel: (306) 752-9464
 Toll Free: 1-800-611-6349 (24 hours)

Moose Jaw, SK

Sexual Assault Services of Saskatchewan
 Toll Free: 1-800-214-7083 (24 hours)

North Battleford, SK

Battlefords and Area Sexual Assault Centre
 Tel: (306) 446-4444 (24 hours)
 Toll Free: 1-866-567-0055

Prince Albert, SK

Prince Albert Mobile Crisis Unit
 Tel: (306) 764-1011 (24 hours)

Prince Albert Area

Sexual Assault Services of Saskatchewan
 Tel: (306) 764-1011 (24 hours)

Regina, SK

Family Services Regina, Domestic Violence Unit
 Tel: (306) 757-6675

Regina, SK

Regina Sexual Assault Centre
 Tel: (306) 352-0434 (24 hours)

Regina, SK

Sexual Assault Services of Saskatchewan
 Tel: (306) 352-0434 (24 hours)

Saskatoon, SK

Family Services Saskatoon, Healthy Relationship Program
 Tel: (306) 244-0127

Saskatoon, SK

Saskatoon Sexual Assault & Information Centre
 Tel: (306) 244-2224

Swift Current, SK

Sexual Assault Services of Saskatchewan
 Tel: (306) 764-1011 (24 hours)

Weyburn, SK

Battlefords and Area Sexual Assault Centre
 Tel: (306) 842-8821
 Toll Free: 1-800-214-7083 (24 hours, accepts collect calls)

INFORMATION

These resources provide useful information for a woman escaping an abusive relationship. Information provided can include family law and legal aid resources, women's resources, and other information related to domestic violence.

Humboldt, SK

PARTNERS Family Services
P.O. Box 2741 - 905, 5th Avenue, Humboldt SK, S0K 2A0
Tel: (306) 682-4135
Toll Free: 1-866-682-4135
Fax: (306) 682-4154
Website: www.partnersfamilyservices.ca

Regina, SK

Family Law Information Centre
3085 Albert Street, Suite 323, Regina SK, S4S 0B1
Tel: (306) 787-5837
Fax: (306) 787-0107
Toll Free: 1-888-218-2822 (in province)
Website: www.justice.gov.sk.ca/Family-Law-Information-Centre

Regina, SK

Pro Bono Law Saskatchewan
Avord Tower, 2002 Victoria Avenue, Suite 1110,
Regina SK, S4P 0R7
Tel: (306) 569-3098
Toll Free: 1-855-833-7257
Fax: (306) 352-2989
Email: info@pblsask.ca
Website: www.pblsask.ca

Regina, SK

Provincial Association of Transition Houses and
Services of Saskatchewan
2505 - 11 Avenue, Regina SK, S4P 0K6
Tel: (306) 522-3515
Fax: (306) 522-0830
Email: paths@sasktel.net
Website: www.pathssk.org

Regina, SK

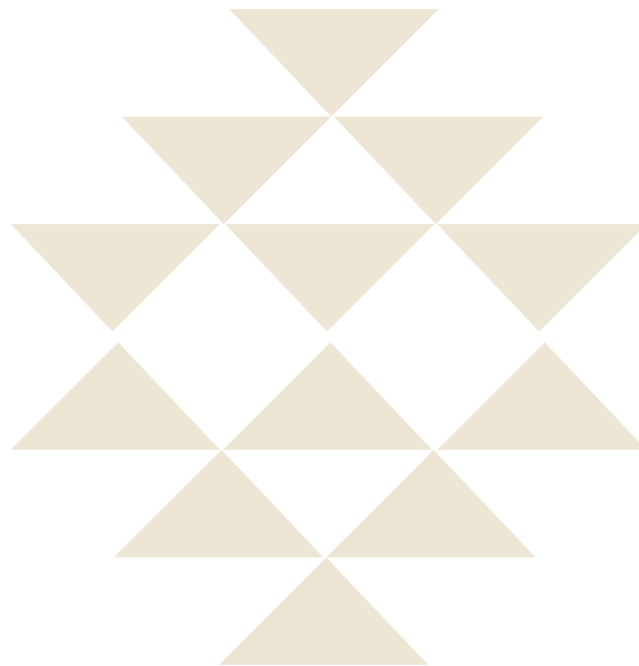
Saskatchewan Aboriginal Courtworker Program
1874 Scarth Street, Suite 600, Regina SK, S4P 4B3
Tel: (306) 787-6467
Fax: (306) 787-0078
Website: www.justice.gov.sk.ca/aboriginalcourtworkerprogram

Saskatoon, SK

Family Services Saskatoon
Tel: (306) 244-0127
Fax: (306) 244-1201

Saskatoon, SK

Legal Aid Saskatchewan
201 - 21 Street East, Suite 502, Saskatoon SK, S7K 0B8
Tel: (306) 933-5300
Toll Free: 1-800-667-3764 (in province)
Fax: (306) 933-6764
Email: inquires@legalaid.sk.ca
Website: www.legalaid.sk.ca





ALBERTA



TRANSITION HOUSES

Transition houses are safe houses specifically for women and their children who are escaping an abusive relationship.

Banff, AB

Bow Valley Women's Shelter
Tel: (403) 760-3200
Tel: (403) 762-3560 (after hours)
Toll Free: 1-800-813-4138

Black Diamond, AB

Rowan House Emergency Shelter
Tel: (403) 652-3311 (24 hours)
Toll Free: 1-855-652-3311

Brooks, AB

Cantara Safe House
Tel: (403) 793-2232 (24 hours, accepts collect calls)

Calgary, AB

AwoTaan Native Women's Shelter
Tel: (403) 531-1972 (24 hours, accepts collect calls)

Calgary, AB

Calgary Women's Emergency Shelter
Tel: (403) 234-7233 (24 hours)
Toll Free: 1-866-606-7233 (in province)

Calgary, AB

YWCA Sheriff King Home Emergency Shelter
Tel: (403) 266-0707 (24 hours)

Camrose, AB

Camrose Women's Shelter Society
Tel: (780) 672-1035
Toll Free: 1-877-672-1010 (24 hours, in province)

Cold Lake, AB

Dr. Margaret Savage Crisis Centre
Tel: (780) 594-3353 (24 hours)
Toll Free: 1-866-594-0533 (in province)

Edmonton, AB

Lurana Shelter
Tel: (780) 424-5875 (24 hours, accepts collect calls)

Edmonton, AB

WIN House
Tel: (780) 479-0058 (24 hours)

Enilda, AB

Sucker Creek Woman's Emergency Shelter
Tel: (780) 523-4357 (24 hours)
Toll Free: 1-866-523-2929 (in province)

Fairview, AB

Crossroads Resource Centre
Tel: (780) 835-2120 (24 hours)
Toll Free: 1-877-835-2120 (in province)

Fort Chipewayan, AB

Paspew House
Tel: (780) 697-3323 (24 hours)

Fort McMurray, AB

Unity House
Tel: (780) 743-1190 (24 hours, accepts collect calls)

Grande Cache, AB

Grand Cache Transition House
Tel: (780) 827-3776
Tel: (780) 827-1791 (after hours)
Toll Free: 1-866-957-3776 (in province)

Grande Prairie, AB

Odyssey House
Tel: (780) 532-2672 (24 hours, accepts collect calls)

Hinton, AB

Yellowhead Emergency Shelter
Tel: (780) 865-5133 (24 hours)
Toll Free: 1-800-661-0937

Lac La Biche, AB

Hope Haven Women's Shelter
Tel: (780) 623-3100 (24 hours)
Toll Free: 1-866-727-4673 (in province)

Lethbridge, AB

YWCA Harbour House
Tel: (403) 320-1881 (24 hours)
Toll Free: 1-866-297-0447 (in province)

Lloydminster, AB

Lloydminster Interval House
Tel: (780) 875-0966 (24 hours, accepts collect calls)

Maskwakis (Hobbema), AB

Ermineskin Women's Shelter
Tel: (780) 585-4444 (24 hours)
Toll Free: 1-866-585-3941, press 299 (in province)

Medicine Hat, AB

Phoenix Safe House
Tel: (403) 529-1091 (24 hours)
Toll Free: 1-800-661-7949

Morley, AB

Stoney Eagle's Nest Family Shelter
Tel: (403) 881-2000 (24 hours)

Peace River, AB

Peace River Regional Women's Shelter
 Tel: (780) 624-3466 (24 hours)
 Toll Free: 1-877-624-3466 (in province)

Pincher Creek, AB

Pincher Creek Women's Emergency Shelter
 Tel: (403) 627-2114 (24 hours)
 Toll Free: 1-888-354-4868

Red Deer, AB

Central Alberta Women's Emergency Shelter
 Tel: (403) 346-5643 (24 hours)
 Toll Free: 1-888-346-5643

Rocky Mountain, AB

Mountain Rose Women's Shelter
 Tel: 1-877-845-4141 (24 hours, in province)

Sherwood, AB

A Safe Place
 Tel: (780) 464-7233 (24 hours, accepts collect calls)
 Toll Free: 1-877-252-7233

Slave Lake, AB

Northern Haven Women's Shelter
 Tel: (780) 849-4418 (24 hours)
 Toll Free: 1-780-214-4418

Standoff, AB

Kainai Women's Wellness Lodge
 Tel: (403) 653-3946 (24 hours)
 Toll Free: 1-888-653-1909

St. Paul, AB

Columbus House of Hope
 Tel: (780) 645-5195 (24 hours)
 Toll Free: 1-800-263-3045

Taber, AB

Safe Haven Women's Shelter
 Tel: (403) 223-0483 (24 hours, accepts collect calls)

Wabasca, AB

Bigstone Cree Nation Women's Emergency Shelter
 Tel: (780) 891-3333 (24 hours)
 Toll Free: 1-877-891-5322

Whitecourt, AB

Wellspring Family Resource & Crisis Centre
 Tel: (780) 778-6209 (24 hours)
 Toll Free: 1-800-467-4049

WOMEN'S EMERGENCY SHELTERS

Emergency shelters are for those who find themselves in need of shelter for a variety of reasons, such as homelessness, mental health issues, or leaving an abusive relationship. The shelters listed below only include emergency shelters for women.

Calgary, AB

YWCA, Mary Dover House
 Tel: (403) 263-1550 (24 hours)

Edmonton, AB

Women's Emergency Accommodation Centre
 Tel: (780) 423-5302 (24 hours)

CRISIS LINES AND PROGRAMS

These services cannot offer shelter, but can offer assistance to a woman escaping an abusive relationship. Services offered can include referrals, emotional support and counselling, support groups, advocacy, or accompaniments.

Province Wide

Family Violence Info Line
 Toll Free: 310-1818 (24 hours, in province)

Banff, AB

Bow Valley Distress Centre Crisis Line
 Tel: (403) 266-4357 (24 hours)

Calgary, AB

Calgary Communities Against Sexual Abuse
 Tel: (403) 237-5888 (24 hours)
 Toll Free: 1-877-237-5888

Calgary, AB

Women's Centre of Calgary
 Tel: (403) 264-1155
 Fax: (403) 264-1203

Edmonton, AB

24-hour Emergency Income Support Contact Centre
 Tel: (780) 644-5135
 Toll Free: 1-866-644-5135

Edmonton, AB

Sexual Assault Centre of Edmonton
 Tel: (780) 423-4121 (24 hours, accepts collect calls)

Fort McMurray, AB

Fort McMurray Sexual Assault Program
 Tel: (780) 791-6708 (24 hours, accepts collect calls)

Grande Prairie, AB

Peace Country Sexual Assault Help Line
 Toll Free: 1-888-377-3223 (24 hours, in province)

Lethbridge, AB

YWCA Harbour House
 Tel: (403) 320-1881 (24 hours)
 Toll Free: 1-866-296-0447

Lloydminster, AB

Lloydminster Sexual Assault & Information Centre
 Tel: (306) 825-8255 (24 hours, accepts collect calls)

Red Deer, AB

Sexual Assault Crisis Line
 Tel: (403) 356-1019
 Toll Free: 1-866-956-1099 (24 hours)

Red Deer, AB

Women's Outreach
 Toll Free: 1-866-347-2480

Sherwood Park, AB

SAFFRON Strathcona Sexual Assault Centre
 Tel: (780) 449-0900
 Toll Free: 1-888-416-7722

INFORMATION

These resources provide useful information for a woman escaping an abusive relationship. Information provided can include family law and legal aid resources, women's resources, and other information related to domestic violence.

Calgary, AB

Association of Alberta Sexual Assault Services
 Northland Building, 910 - 7th Avenue SW, Suite 700, Calgary
 AB, T2P 3N8
 Tel: (403) 237-6905 ext. 230
 Email: mailbox@aasas.ca
 Website: www.aasas.ca

Edmonton, AB

Alberta Council of Women's Shelters
 10310 Jasper Avenue, Suite 310, Edmonton AB, T5J 2W4
 Tel: (780) 456-7000
 Toll Free: 1-866-331-3933
 Website: www.acws.ca

Edmonton, AB

Centre for Public Legal Education Alberta
 10050 - 112 Street, Suite 800, Edmonton AB, T5K 2J1
 Tel: (780) 451-8764
 Fax: (780) 451-2341
 Email: www.willownet.ca

Edmonton, AB

Government of Alberta, Legal Aid
 Revillon Building, 10320 - 102 Avenue, Suite 400, Edmonton
 AB, T5J 4A1
 Tel: (780) 427-7575
 Toll Free: 1-866-845-3425
 Email: lsc@legail.ab.ca
 Website: www.legalaid.ab.ca


Edmonton, AB

Legal Family Crisis Clinic
 10587 - 108 Street Northwest, Edmonton AB, T5H2Z8
 Tel: (780) 421-1999
 Website: www.legalfamilycrisisedmonton.ca

Edmonton, AB

Native Counselling Services of Alberta
 10975 - 124 Street, Edmonton Alberta, T5M 0H9
 Tel: (780) 451-4002
 Fax: (780) 428-0187
 Website: www.ncsa.ca





BRITISH COLUMBIA



TRANSITION HOUSES

Transition houses are safe houses specifically for women and their children who are escaping an abusive relationship.

Abbotsford, BC

Abbotsford Transition House
Tel: (604) 852-6008 (24 hours, accepts collect calls)

Aldergrove, BC

Libra Transition House
Tel: (604) 857-5797 (24 hours, accepts collect calls)

Barriere, BC

Barriere Safe Home
Tel: (250) 682-6444 (24 hours, accepts collect calls)

Bella Coola, BC

Nuxalk Nation Transition House
Toll Free: 1-877-799-0070 (24 hours)

Bumaby, BC

Dixon House
Tel: (604) 298-3454 (24 hours, accepts collect calls)

Burns Lake, BC

Eagle's Nest Transition House
Tel: (250) 692-5720 (24 hours, accepts collect calls)

Campbell River, BC

Ann Elmore Transition House
Tel: (250) 286-3666 (24 hours)
Toll Free: 1-800-667-2188 (in province)

Chetwynd, BC

Chetwynd Safe House
Tel: (250) 788-1976 (24 hours, accepts collect calls)

Chilliwack, BC

Ann Davis Transition House
Tel: (604) 792-3116 (24 hours, accepts collect calls)

Chilliwack, BC

Wilma's Transition House
Tel: (604) 858-0468
Toll Free: 1-888-558-0468 (24 hours)

Clearwater, BC

Clearwater Safe Home
Tel: (250) 674-2135 (24 hours, accepts collect calls)

Barriere, BC

Barriere Safe Home
Tel: (250) 682-6444 (24 hours, accepts collect calls)

Courtenay, BC

Lilli House
Tel: (250) 338-1227 (24 hours, accepts collect calls)

Cranbrook, BC

Kootenay Haven Transition House
Tel: (250) 426-4887
Toll Free: 1-888-353-2273 (24 hours)

Creston, BC

Irvine House Safe Home
Tel: (250) 428-6856 (24 hours, accepts collect calls)

Dawson Creek, BC

Mizpah Transition House
Tel: (250) 782-9176 (24 hours, accepts collect calls)

Duncan, BC

Somenos Transition House
Tel: (250) 748-8544 (24 hours, accepts collect calls)

Fernie, BC

Elkford Valley Safe Home
Tel: (250) 865-2031
Toll Free: 1-800-200-3003 (24 hours)

Fort Nelson, BC

Fort Nelson Women's Shelter
Tel: (250) 774-4742 (24 hours, accepts collect calls)

Fort St. James, BC

Fireweed Safe Haven Women's Shelter
Tel: (250) 996-8000 (24 hours, accepts collect calls)

Fort St. John, BC

Meaope Transition House
Tel: (250) 785-5208 (24 hours, accepts collect calls)

Golden, BC

Golden Safe Home
Tel: (250) 344-2101 (24 hours)

Gold River, BC

Gold River Safe Home
Tel: (250) 286-3666 (24 hours)
Toll Free: 1-800-667-2188 (in province)

Grand Forks, BC

Boundary Women's Transition House
Tel: (250) 442-3131 (24 hours)
Toll Free: 1-855-441-3131 (in province)

Hope, BC

Jean Scott Transition House
Tel: (604) 869-5191 (24 hours, accepts collect calls)

Invermere, BC

Women's Information & Safe Homes
Tel: (250) 341-3963
Toll Free: 1-800-200-3003 (24 hours)

Kamloops, BC

Y Women's Emergency Shelter
Tel: (250) 374-6162
Toll Free: 1-877-885-2949

Kaslo, BC

Kaslo Safe Home
Tel: (250) 353-7691

Kelowna, BC

Kelowna Women's Shelter
Tel: (250) 763-1040 (24 hours, accepts collect calls)

Keremeos, BC

Keremeos Safe Home
Tel: (250) 488-1167
Toll Free: 1-800-814-2033 (24 hours)

Kitimat, BC

Dunmore Place
Tel: (250) 632-6070 (24 hours, accepts collect calls)

Langley, BC

Ishtar Transition House
Tel: (604) 530-9442 (24 hours, accepts collect calls)

Lytton, BC

Helping Hands Transition House
Tel: (250) 455-2284 (24 hours)
Toll Free: 1-800-318-4455

Mackenzie, BC

Mackenzie Safe Home
Tel: (250) 997-6595
Toll Free: 1-888-562-1214 (24 hours)

Maple Ridge, BC

Cythera Transition House
Tel: (604) 467-9966 (24 hours, accepts collect calls)

Massett, BC

Tlaa Juuhldaa Naay Transition House
Tel: (250) 626-4666 (24 hours)
Toll Free: 1-877-626-4677

McBride, BC

McBride Safe Home
Tel: (250) 569-2266

Merritt, BC

Coldwater Band Transition House
Tel: (250) 378-6170 (24 hours, accepts collect calls)

Mission, BC

Mission Transition House
Tel: (604) 826-7800 (24 hours, accepts collect calls)

Nanaimo, BC

Haven House
Tel: (250) 756-0616 (24 hours)
Toll Free: 1-888-756-0616

Nakusp, BC

Nakusp Safe Home
Tel: (250) 265-1843

Nelson, BC

Aimee Beaulieu Transition House
Tel: (250) 354-4357 (24 hours, accepts collect calls)

New Westminster, BC

Monarch Place
Tel: (604) 521-1888 (24 hours)

North Vancouver, BC

Sage House
Tel: (604) 987-3374 (24 hours, accepts collect calls)

Penticton, BC

Okanagan Nation Emergency Transition House
Tel: (250) 493-4902
Toll Free: 1-877-493-4909 (24 hours, in province)

Penticton, BC

South Okanagan Women in Need Transition House
Tel: (250) 493-7233
Toll Free: 1-800-814-2033 (24 hours)

Port Alberni, BC

Port Alberni Transition House
Tel: (250) 724-2223 (24 hours, accepts collect calls)

Powell River, BC

Grace House
Tel: (604) 485-4554 (24 hours, accepts collect calls)

Prince George, BC

Amber House
Tel: (250) 562-5868 (24 hours)
Toll Free: 1-866-563-1113 (in province)

Prince Rupert, BC

Ravens Keep Transition House
Tel: (250) 627-8588 (24 hours)

Quesnel, BC

Amata Transition House
Tel: (250) 992-3385 (24 hours)

Revelstoke, BC

Forsythe House
Tel: (250) 837-1111 (24 hours, accepts collect calls)

Richmond, BC

Nova Transition House
Tel: (604) 270-4911 (24 hours, accepts collect calls)

Salmon Arm, BC

Salmon Arm Women's Shelter
Tel: (250) 832-9616 (24 hours, accepts collect calls)

Salt Spring, BC

Salt Spring Island Transition House
Tel: (250) 537-0735 (24 hours)
Toll Free: 1-877-435-7544 (in province)

Smithers, BC

Passage Transition House
Tel: (250) 847-2595 (24 hours, accepts collect calls)

Sooke, BC

Annie's Place Transition House
Tel: (250) 642-2591 (24 hours, accepts collect calls)

Squamish, BC

Pearl's Place Transition House
Tel: (604) 892-5711
Toll Free: 1-877-890-5711 (24 hours, in province)

Sunshine Coast, BC

Yew Transition House
Tel: (604) 885-2944 (24 hours)

Surrey/White Rock, BC

Durrant House
Tel: (604) 531-4430 (24 hours, accepts collect calls)

Surrey, BC

Shimai Transition House
Tel: (604) 581-9100 (24 hours, accepts collect calls)

Surrey, BC

Virginia Sam Transition House
Tel: (604) 572-5116 (24 hours, accepts collect calls)

Trail, BC

WINS Transition House
Tel: (250) 364-1543 (24 hours, accepts collect calls)

Terrace, BC

Ksan House
Tel: (250) 635-6447 (24 hours)
Toll Free: 1-888-337-5726 (in province)

Tumbler Ridge, BC

Tumbler Ridge Safe Home
Tel: (250) 242-2082 (24 hours)

Ucluelet, BC

Westcoast Transition House
Tel: (250) 726-2020
Toll Free: 1-877-726-2080 (24 hours, in province)

Vancouver, BC

Helping Spirit Lodge
Tel: (604) 872-6649 (24 hours, accepts collect calls)

Vancouver, BC

Kate Booth House
Tel: (604) 872-7774 (24 hours)

Vancouver, BC

Vancouver Rape Relief & Women's Shelter
Tel: (604) 872-8212 (24 hours, accepts collect calls)

Vanderhoof, BC

Joy Aitkens Safe Home
Tel: (250) 567-9959 (24 hours, accepts collect calls)

Vernon, BC

Vernon Women's Transition House
Tel: (250) 542-1122 (24 hours, accepts collect calls)

Victoria, BC

Victoria Women's Transition House
Tel: (250) 385-6611 (24 hours, accepts collect calls)

Victoria, BC

Cridge Transition House
Tel: (250) 479-3963 (24 hours, accepts collect calls)

William's Lake, BC

Chiwid Transition House
Tel: (250) 398-5658 (24 hours, accepts collect calls)

100 Mile House, BC

100 Mile House Safe Home
Tel: (250) 395-4093
Toll Free: 1-800-563-0808 (24 hours, in province)

WOMEN'S EMERGENCY SHELTERS

Emergency shelters are for those who find themselves in need of shelter for a variety of reasons, such as homelessness, mental health issues, or leaving an abusive relationship. The shelters listed below only include emergency shelters for women.

New West, BC

Liz Gurney's
Tel: (604) 524-0710 (24 hours)

Phoenix Transition House

Prince George, BC
Tel: (250) 563-7305 (24 hours, accepts collect calls)

Parksville, BC

Parksville Qualicum Haven House
Toll Free: 1-888-756-0616 (24 hours, in province)

Surrey, BC

Cynthia's Place
Tel: (604) 582-2456 (24 hours)

Surrey, BC

Sheena's Place
Tel: (604) 581-1538 (24 hours, accepts collect calls)

Vancouver, BC

412 Women's Emergency Shelter
Tel: (604) 715-8480 (Weekends 24 hours)

Vancouver, BC

Powell Place
Tel: (604) 606-0403 (24 hours, accepts collect calls)

Vancouver, BC

St. Elizabeth's Shelter
Tel: (604) 606-0412 (24 hours, accepts collect calls)

Vancouver, BC

Vi Fineday
Tel: (604) 736-2423 (24 hours)

CRISIS LINES AND WOMEN'S PROGRAMS

These services cannot offer shelter, but can offer assistance to a woman escaping an abusive relationship. Services offered can include referrals, emotional support and counselling, support groups, advocacy, or accompaniments.

Province Wide

VICTIMLINK BC
Toll Free: 1-800-563-0808 (24 hours)

Abbotsford, BC

Abbotsford Women's Support Services
Tel: (604) 855-3363

Chetwynd, BC

Chetwynd Women's Resource Society
Tel: (250) 788-3793

Fernie, BC

Fernie Women's Resource Centre
Tel: (250) 423-4687
Toll Free: 1-800-339-7393

Grand Forks, BC

Boundary Women's Resource Centre
Tel: (250) 442-5212

Kamloops, BC

Kamloops Sexual Assault Counselling Centre
Tel: (250) 372-0179

Port Hardy, BC

North Island Crisis & Counselling Centre Society
Tel: (250) 949-6033 (24 hours)

Prince George, BC

Prince George Sexual Assault Centre
Tel: (250) 564-8302

Queen Charlotte Islands, BC

Queen Charlotte Island Women's Centre
Tel: (250) 559-4743

Quesnel, BC

Quesnel Women's Resource Centre
Tel: (250) 992-8472

Saanichton, BC

Women of our People Society
Tel: (250) 652-7623

Sunshine Coast, BC

Women's Outreach Service
Tel: (604) 741-5246

Surrey, BC

Surrey Women's Centre
Tel: (604) 583-1295 (24 hours)

Terrace, BC

Terrace Sexual Assault Centre
Tel: (250) 635-1911 (24 hours, accepts collect calls)

Trail, BC

Trail 24 Hour Regional Crisis Line
Toll Free: 1-888-353-2273

Vancouver, BC

Battered Women's Support Services
Tel: (604) 687-1867
Toll Free: 1-855-687-1868

Vancouver, BC

Women Against Violence Against Women Rape
Crisis Centre
Tel: (604) 255-6344 (24 hours)
Toll Free: 1-877-392-7583

INFORMATION

These resources provide useful information for a woman escaping an abusive relationship. Information provided can include family law and legal aid resources, women's resources, and other information related to domestic violence.

Province Wide

Domestic Violence: It's Never OK

Website: www.domesticviolencebc.ca

Vancouver, BC

BC Society of Transition Houses

475 Howe Street, Suite 507, Vancouver BC, V6C 2B3

Tel: (604) 669-6943

Fax: (604) 682-6962

Email: info@bcsth.ca

Website: www.bcsth.ca

Vancouver, BC

Ending Violence Association of British Columbia

510 West Hastings Street, Suite 1404, Vancouver BC, V6B 1L8

Tel: (604) 633-2506

Fax: (604) 633-2507

Email: evabc@endingviolence.org

Website: www.endingviolence.org

Vancouver, BC

Government of British Columbia, Victim Services and Crime Prevention

815 Hornby Street, Suite 302, Vancouver BC, V6Z 2E6

Tel: (604) 660-5199

Fax: (604) 660-5340

Email: victimservices@gov.bc.ca

Website: www.pssg.gov.bc.ca/victimservices

Vancouver, BC

Legal Services Society

510 Burrard Street, Suite 400, Vancouver BC, V6C 3A8

Tel: (604) 408-2172

Toll Free: 1-866 577-2525

Website: www.lss.bc.ca

Vancouver, BC

Native Courtworker and Counselling Association of British Columbia

1999 Marine Drive, Suite 207, North Vancouver BC, V7P 3J3

Tel: 604-985-5355

Fax: 604-985-8933

Email: nccabc@nccabc.net

Website: www.nccabc.ca

Victoria, BC

The Law Centre

850 Burdett Avenue, Suite 225, Victoria BC, V8W 0C7

Tel: (250) 385-1221

Fax: (250) 385-1226

Website: www.thelawcentre.ca





YUKON



TRANSITION HOUSES

Transition houses are safe houses specifically for women and their children who are escaping an abusive relationship.

Watson Lake, YT

Help & Hope for Families Transition Home
Tel: (867) 536-7233 (24 hours, accepts collect calls)

Whitehorse, YT

Yukon Women's Transition Home
Tel: (867) 668-5733 (24 hours, accepts collect calls)

WOMEN'S EMERGENCY SHELTERS

Emergency shelters are for those who find themselves in need of shelter for a variety of reasons, such as homelessness, mental health issues, or leaving an abusive relationship. The shelters listed below only include emergency shelters for women.

Dawson City, YT

Dawson City Women's Shelter
Tel: (867) 993-5086

CRISIS LINES AND PROGRAMS

These services cannot offer shelter, but can offer assistance to a woman escaping an abusive relationship. Services offered can include referrals, emotional support and counselling, support groups, advocacy, or accompaniments.

Territory Wide

VictimLINK
Toll Free: 1-800-536-0808 (24 hours)

Whitehorse, YT

Whitehorse Aboriginal Women's Circle
Tel: (867) 667-6162

INFORMATION

These resources provide useful information for a woman escaping an abusive relationship. Information provided can include family law and legal aid resources, women's resources, and other information related to domestic violence.

Watson Lake, YT

Help & Hope for Families Society
P.O. Box 864, Watson Lake YT, Y0A 1C0
Tel: (867) 536-7233
Fax: (867) 536-7770
Email: info@helpandhopeforfamilies.ca
Website: www.helpandhopeforfamilies.ca

Whitehorse, YT

Aboriginal Courtworker Program
Council of Yukon First Nations
2131 Second Avenue, Suite 201, Whitehorse YT, Y1A 2C3
Tel: (867) 667-3784 (accepts collect calls)
Fax: (867) 667-8094
Website: www.justice.gov.yk.ca/prog/cjps/cj/1541.html

Whitehorse, YT

Victoria Faulkner Women Centre
503 Hanson Street, Whitehorse YT, Y1A 1Y9
Tel: (867) 667-2693
Fax: (867) 667-7004
Email: vfwc@northwestel.net
Website: www.victoriafaulknerwomenscentre.blogspot.ca

Whitehorse, YT

Whitehorse Aboriginal Women's Circle
307 Jarvis Street, Suite 202, Whitehorse YT, Y1A 2H3
Tel: (867) 668-7532
Email: wawc@northwestel.net
Website: www.wawc.ca

Whitehorse, YT

Yukon Government, Victim Services
301 Jarvis Street, 2nd Floor, Whitehorse YT, Y1A 2C6
Tel: (867) 667-8500
Toll Free: 1-800-661-0408, press 8500 (in territory)
Fax: (867) 393-6240
Email: victim.services@gov.yk.ca
Website: www.justice.gov.yk.ca/prog/cor/vs/index.html

Whitehorse, YT

Yukon Legal Services Society
231 Second Avenue, Suite 203, Whitehorse YT, Y1A 1C3
Tel: (867) 667-5210
Toll Free: 1-800-661-0408 ext. 5210 (in territory)
Fax: (867) 667-8649
Email: administration@legalaids.yk.ca
Website: www.legalaids.yk.ca

Whitehorse, YT

Yukon Public Legal Education Association
P.O. Box 2799, Yukon College, Whitehorse YT, Y1A 5K4
Tel: (867) 668-5297
Toll Free: (866) 667-4305
Email: yplea@yukoncollege.yk.ca
Website: www.yplea.com





NORTHWEST TERRITORIES



TRANSITION HOUSES

Transition houses are safe houses specifically for women and their children who are escaping an abusive relationship.

Fort Smith, NT

Sutherland House
Tel: (867) 872-4133 (24 hours)
Toll Free: 1-866-223-7775

Hay River, NT

Family Support Centre
Tel: (867) 874-3311 (24 hours, accepts collect calls)

Inuvik, NT

Inuvik Transition House
Tel: (867) 777-3877 (24 hours, accepts collect calls)

Yellowknife, NT

YWCA Alison McAteer House
Tel: (867) 873-8257 (24 hours)
Toll Free: 1-866-223-7775 (in province)

WOMEN'S EMERGENCY SHELTERS

Emergency shelters are for those who find themselves in need of shelter for a variety of reasons, such as homelessness, mental health issues, or leaving an abusive relationship. The shelters listed below only include emergency shelters for women.

Tuktoyaktuk, NT

Aimayunga Women and Emergency Foster Care Shelter
Tel: (867) 977-2000 (24 hours, accepts collect calls)

Yellowknife, NT

Centre for Northern Families
Tel: (867) 873-9131 (24 hours, accepts collect calls)

CRISIS LINES AND PROGRAMS

These services cannot offer shelter, but can offer assistance to a woman escaping an abusive relationship. Services offered can include referrals, emotional support and counselling, support groups, advocacy, or accompaniments.

Territory Wide

NWT Helpline
Toll Free: 1-800-661-0844 (24 hours, in territory)

INFORMATION

These resources provide useful information for a woman escaping an abusive relationship. Information provided can include family law and legal aid resources, women's resources, and other information related to domestic violence.

Behchoko (Rae Edzo), NT

Aboriginal Courtworker Program
Donda Tili Building, Rae NT, XOE OYO
Tel: (867) 392-6386
Fax: (867) 392-6387

Fort Good Hope, NT

Aboriginal Courtworker Program
Yamoga Land Corp Building, Suite105, Fort Good Hope NT, XOE OH0
Tel: (867) 598-2762
Fax: (867) 598-2525

Fort Simpson, NT

Aboriginal Courtworker Program
Nahendeh Kue Building, 2nd Floor, Fort Simpson NT, XOE ONO
Tel: (867) 695-2106
Fax: (867) 695-2136

Fort Smith, NT

Aboriginal Courtworker Program
195 McDougal Road, Fort Smith NT, XOE OPO
Tel: (867) 872-6568
Fax: (867) 872-3602

Hay River, NT

Aboriginal Courtworker Program
31 Capital Drive, Suite 105, Hay River NT, XOE 1G2
Tel: (867) 874-2475
Fax: (867) 874-3435

Inuvik, NT

Beaufort Delta Legal Aid Clinic
151 Mackenzie Road, Inuvik NT, XOE OTO
Tel: (867) 777-7338
Fax: (867) 777-3211

Behchoko (Rae Edzo), NT

Aboriginal Courtworker Program
Donda Tili Building, Rae NT, XOE OYO
Tel: (867) 392-6386
Fax: (867) 392-6387

Yellowknife, NT

Council Status of Women NWT

P.O. Box 1320, Northwest Tower, 4th Floor, Yellowknife NT,
X1A 2L9

Tel: (867) 920-6177

Toll Free: 1-888-234-4485 (in territory)

Fax: (867) 873-0285

Email: council@statusofwomen.nt.ca

Website: www.statusofwomen.nt.ca

Yellowknife, NT

Legal Services Board of the Northwest Territories

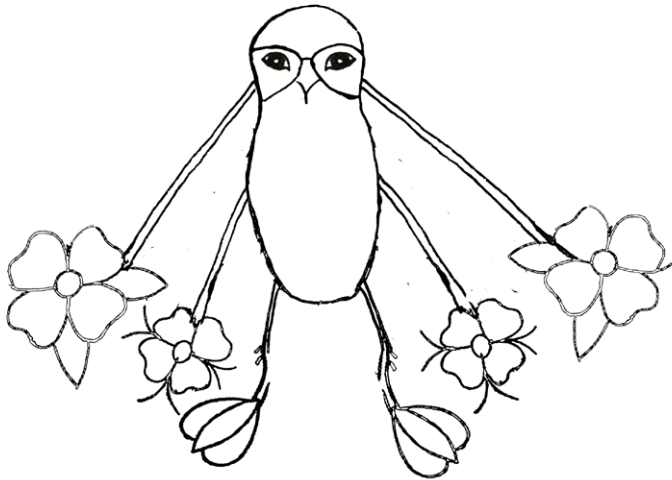
P.O. Box 1320, 4915 - 48 Street, Yellowknife NT, X1A 3S4

Tel: (867) 873-7450

Fax: (867) 873-5320

Email: lsb@gov.nt.ca

Website: www.justice.gov.nt.ca/legalaid



NUNAVUT

TRANSITION HOUSES

Transition houses are safe houses specifically for women and their children who are escaping an abusive relationship.

Iqaluit, NU

Quimaavik Womens Shelter
Tel: (867) 979-4500 (24 hours)

Rankin Inlet, NU

Kataujaq Society Crisis Centre
Tel: (867) 645-2214 (24 hours)

WOMEN'S EMERGENCY SHELTERS

Emergency shelters are for those who find themselves in need of shelter for a variety of reasons, such as homelessness, mental health issues, or leaving an abusive relationship. The shelters listed below only include emergency shelters for women.

Iqaluit, NU

YWCA Sivummut House
Tel: (867) 979-2700 (24 hours)

CRISIS LINES AND PROGRAMS

These services cannot offer shelter, but can offer assistance to a woman escaping an abusive relationship. Services offered can include referrals, emotional support and counselling, support groups, advocacy, or accompaniments.

Iqaluit, NU

Nunavut Kamatsiaqtut Help Line
Tel: (867) 979-3333 (24 hours)
Toll Free: 1-800-265-3333

INFORMATION

These resources provide useful information for a woman escaping an abusive relationship. Information provided can include family law and legal aid resources, women's resources, and other information related to domestic violence.

Cambridge Bay, NU

Kitikmeot Law Centre
25 Mitik Street, Cambridge Bay NU, X0B 0C0
Tel: (867) 983-2906
Toll Free: 1-866-240-4006
Fax: (867) 983-2570

Gjoa Haven, NU

Nunavut Legal Services Board
P.O. Box 125, Gjoa Haven NU, X0B 1J0
Tel: (867) 360-4603
Website: www.nulas.ca



Iqaluit, NU

Maliiganik Tukisiiniakvik Legal Services

P.O. Box 29, Iqaluit NU, X0A 0H0

Tel: (867) 979-5377

Fax: (867) 979-2323

Rankin Inlet, NU

Keewatin Legal Services Centre

P.O. Box 420, Rankin Inlet NU, X0C 0G0

Tel: (867) 645-2536

Fax: (867) 645-2217



NATIONAL

INFORMATION

These resources provide useful information for a woman escaping an abusive relationship. Information provided can include family law and legal aid resources, women's resources, and other information related to domestic violence.

Canadian Association of Sexual Assault Centres

Tel: (604) 876-2622
Fax: (604) 876-8450
E-mail: casac01@shaw.ca
Website: www.casac.ca

Canadian Network of Women's Shelters & Transition Houses

85 Albert Street, Suite 1501, Ottawa ON, K1P 6A4
Tel: (613) 680-5119
Fax: (613) 695-1148
Email: info@endvaw.ca
Website: www.endvaw.ca

Canadian Women's Foundation

133 Richmond St. West, Suite 504, Toronto ON, M5H 2L3
Tel: (416) 365-1444
Toll Free: 1-866-293-4483
Fax: (416) 365-1745
Email: info@canadianwomen.org
Website: www.canadianwomen.org

National Aboriginal Circle Against Family Violence

2 River Road, P.O. Box 2169
Kahnawake, QC J0L 1B0
Tel: (450) 638-2968
Fax: (450) 638-9415
Email: info@nacafv.ca
Website: www.nacafv.ca

Native Women's Association of Canada

1 Nicholas Street, 9th Floor, Ottawa ON, K1N 7B7
Tel: (613) 722-3033
Toll Free: 1-800-461-4043
Fax: (613) 722-7687
Email: reception@nwac.ca
Website: www.nwac.ca

Pauktuutit Inuit Women of Canada

1 Nicholas Street, Suite 520, Ottawa ON, K1N 7B7
Tel: (613) 238-3977
Toll Free: 1-800-667-0749
Fax: (613) 238-1787
Email: info@pauktuutit.ca
Website: www.pauktuutit.ca

Women of the Métis Nation

340 MacLaren Street, Suite 4, Ottawa ON, K2P 0M6
Tel: (613) 232-3216
Fax: (613) 232-4262
Email: info@metiswomen.org
Website: metiswomen.org





www.nwac.ca